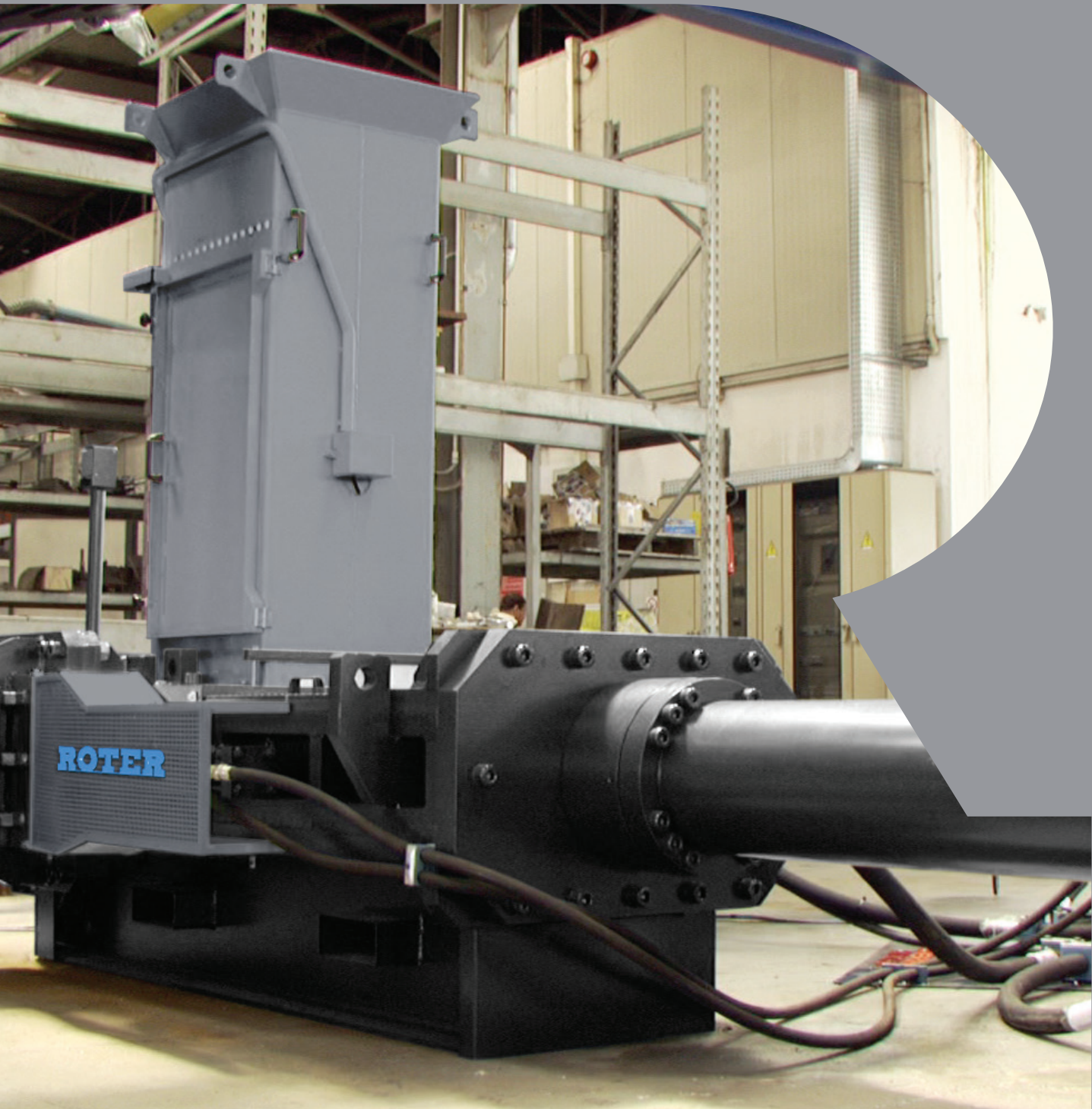


# ROTER

RECYCLING



AUTOMATIC RA40/70/90/140  
BALER



# AUTOMATIC BALER ROTER RECYCLING RA SERIES

Designed for the compaction of metal  
To increase the efficiency of transport and optimizing recycling in foundries.

## 5 models from 0.5 to 6 ton/h



### APPLICATIONS

Scrap processing / production.  
Small size scrap metal.  
Waste collection centers.  
Full integration into industries.

### WORKING PROCESS

Continuous feeding by conveyor or by loader.  
Manage Start / Stop with photocell material presence.  
Manage Start / Stop with the weighing system. (Optional)  
Number of pre-compressions 1-99  
Adjustable pressure and density of the bale.  
Adjustable length of the bale. (\*)

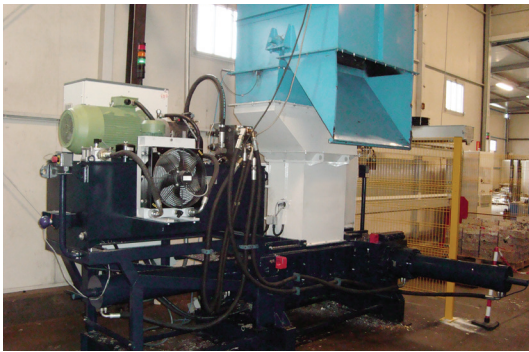


### INSTALLATION

Extremely fast, few hours and the machine is ready for work.  
No civil work required.  
Compact design with reduced overall dimensions.

### BENEFITS

Fully automatic cycle.  
High speed and production capacity at low operating cost.  
Adapted to process a wide range of metals.  
High density of the treated product.  
Extremely customizable to suit your needs.

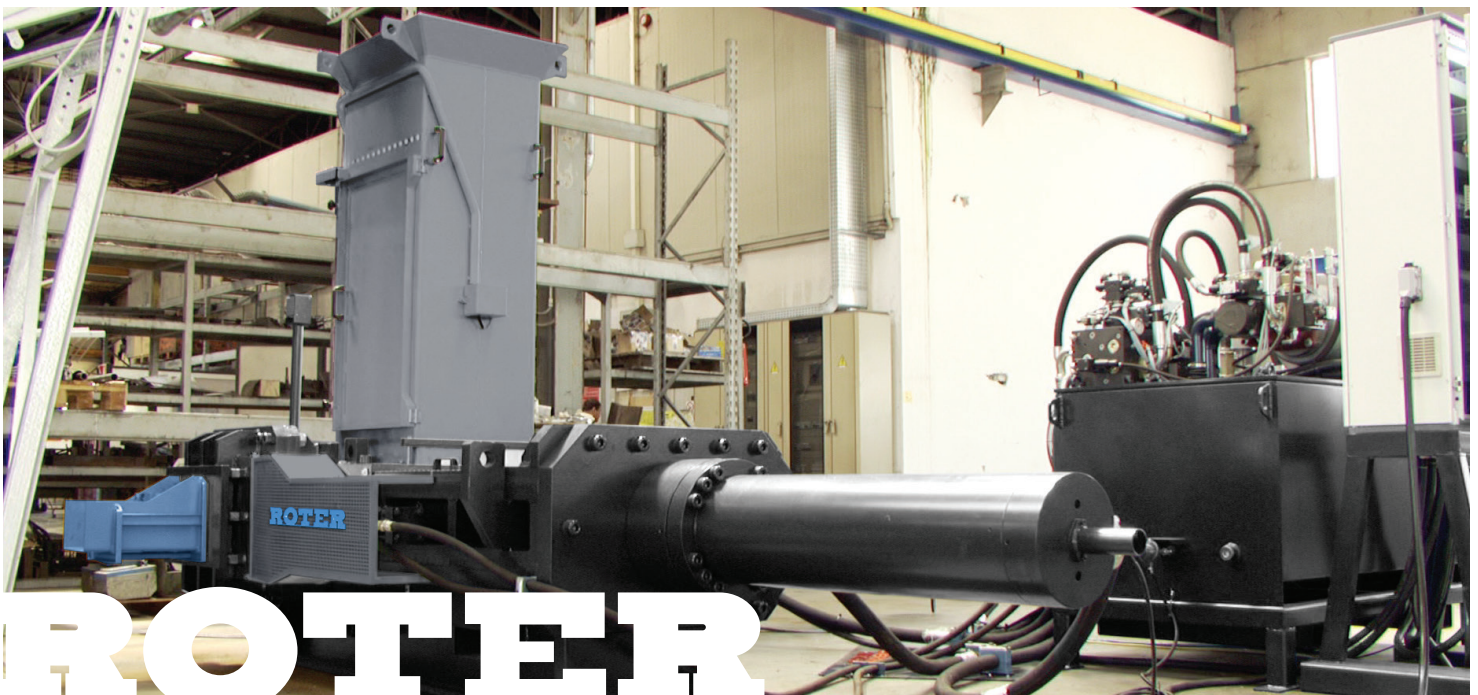


### RELIABILITY

Using component quality to ensure the plant efficiency.  
Industrial Design and very long life span.  
Built for tough working conditions.

### WHY CHOOSE ROTER RECYCLING

After sales service quick and efficient.  
Spare parts available in stock/international standard components.  
All parts are easily accessible for quick and easy maintenance.  
Designed and manufactured according to European quality standards. **CE**



# ROTER

# RA40/70/90/140



# ROTTER

## STANDARD

- Main Pump Parker PV Plus series
- Cylinders with linear position transducers (\*)
- Bolted and replaceable blades
- Hardox wear plates
- Bolted and replaceable (\*)
- Siemens PLC
- DisplayTouch Screen 5 "

(\*) Not applicable on RA40.1

## OPTIONS

- |                               |       |
|-------------------------------|-------|
| Customized Loading hopper     | CH    |
| Customized exit chute         | CS    |
| Hardox wear wave shape        | WP    |
| Preheating hydraulic oil      | OH    |
| Weighting system              | WS    |
| Customized Color              | CCL   |
| Manual in different languages | CM    |
| "Emergency" spare parts kit   | KE    |
| "2000 hours" spare parts kit  | 2000K |

## TECHNICAL DATA

	RA40.1	RA70.1	RA90.2	RA140.2	RA140.2H	
Bale size	400x300	400x300	300x300	300x400	220x220	mm.
Loading box	1000x400	1300x400	1300x600	1400x800	1000x550	mm.
Cutting force	40	70	70	140	140	ton
Main cylinder force	40	70	90	140	140	ton
Pressure on material	33	58	107	117	350	Kg/cm <sup>2</sup>
Working pressure	250	280	280	280	280	bar
Electric motor power	11	18,5	22	45	45	kW
Bale Hour/Max	40	80	90	90	90	n.
Capacity Al *	0,3	0,6	1,2	3,5	1,6	ton/h
Capacity Fe *	0,5	1	2	6	2,2	ton/h

\* The productivity is based on type of material and feeding mode.

# ROTER

RECYCLING

**R.F. srl**

Via Fontanella, 2  
44035 - Formignana (FE)  
ITALY

P.Iva / Cod. Fiscale 01949540387  
Capitale sociale € 500.000,00 i.v.

TEL.: +39 0533 608911

[www.roter-recycling.com](http://www.roter-recycling.com)  
[info@roter-recycling.com](mailto:info@roter-recycling.com)



C-REV.03

Distributed by:

